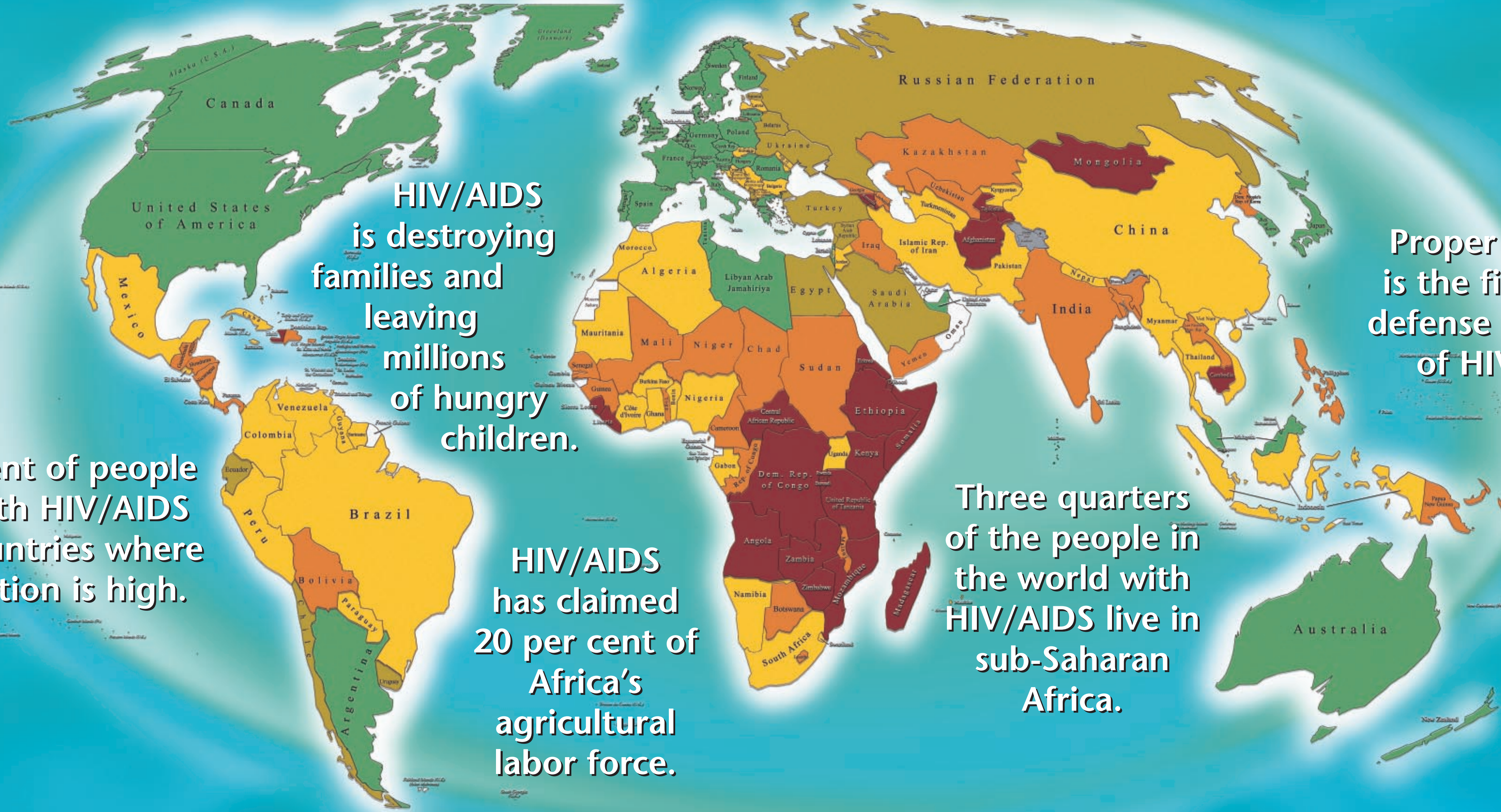


# HIV/AIDS AND HUNGER



HIV/AIDS is destroying families and leaving millions of hungry children.

Proper nutrition is the first line of defense for victims of HIV/AIDS.

95 per cent of people living with HIV/AIDS are in countries where malnutrition is high.

HIV/AIDS has claimed 20 per cent of Africa's agricultural labor force.

Three quarters of the people in the world with HIV/AIDS live in sub-Saharan Africa.

## PREVALENCE OF HUNGER

Category	1	2	3	4	5	No Data	Incomplete Data
Undernourished	≥35%	20-34%	5-19%	2.5-4%	≤2.5%	No Data	Incomplete Data
Description	Very High	Moderately High	Moderately Low	Very Low	Extremely Low		

The boundaries and names shown and the designations used on this map do not imply official endorsement or acceptance by the United Nations. Dotted line represents approximately the Line of Control in Jammu and Kashmir agreed upon by India and Pakistan. The final status of Jammu and Kashmir has not yet been agreed upon by the parties. \* Disputed Borderlines (India/China)

Source: The State of Food Insecurity in the World 2003, Food and Agriculture Organization of the United Nations. © 2004 United Nations World Food Programme. www.wfp.org

